



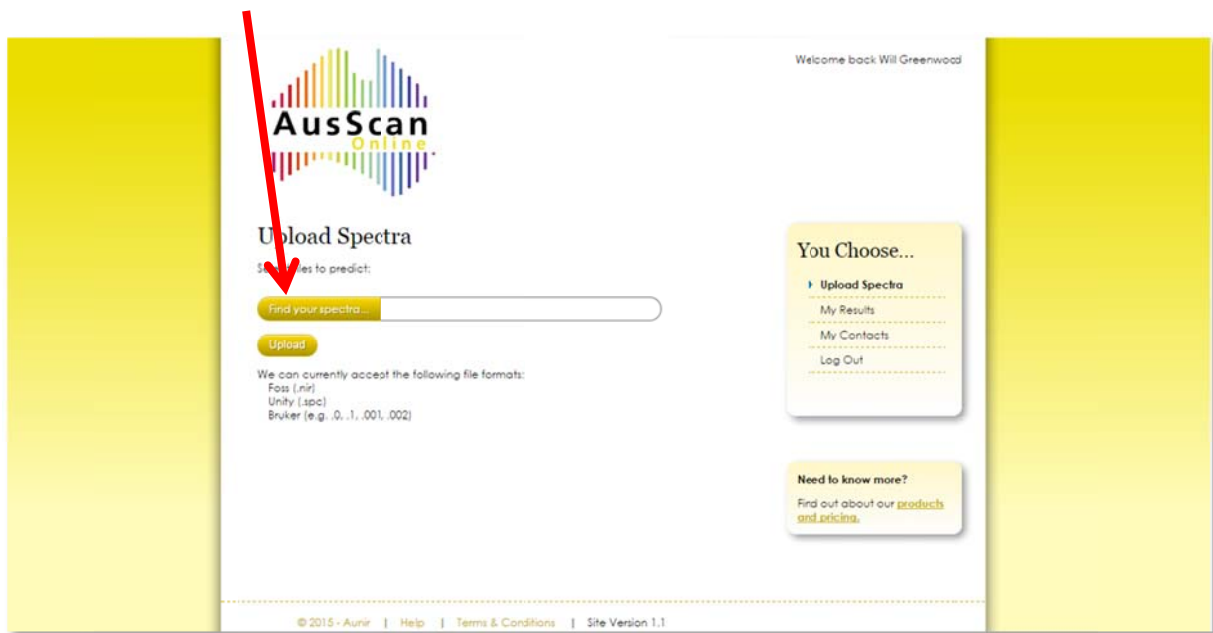
AusScan Online – Uploading Spectra

1. Log into AusScan Online by visiting www.aunir.com/products/ausscanonline and clicking on the link to log in to the service. Put your email address and password into the boxes and click on 'Sign-In'. This will bring up the homepage.

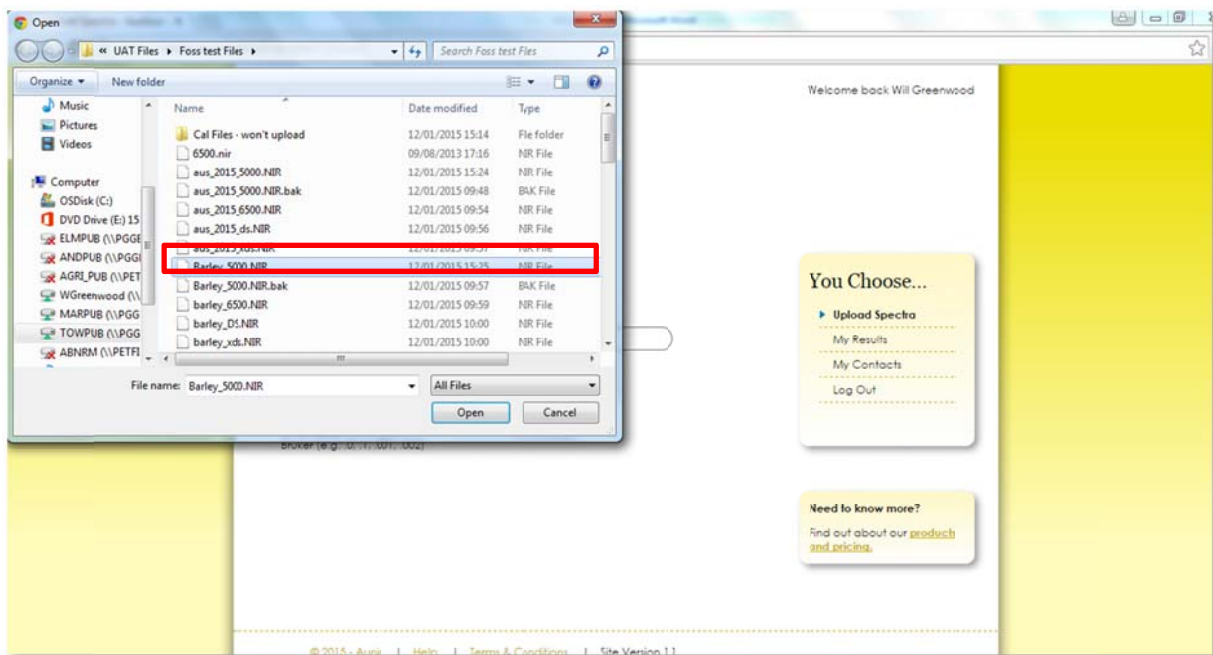
The screenshot shows the login interface for AusScan Online. At the top, there are two tabs: "Sign In" (selected) and "Create New Account". Below the tabs are two input fields: "Email address" and "Password". A "Remember me" checkbox is located below the password field. At the bottom of the form, there is a "Forgot your password?" link, a "Cancel" button, and a yellow "Sign In" button.

The screenshot shows the homepage of AusScan Online. The header includes the AusScan Online logo and a welcome message: "Welcome back Will Greenwood". The main content area is titled "Upload Spectra" and contains a section for "Select files to predict:" with a search bar labeled "Find your spectra..." and an "Upload" button. Below this, it lists supported file formats: "Foss (.nir)", "Unity (.spc)", and "Bruker (e.g., 0, 1, .001, .002)". On the right side, there is a "You Choose..." menu with options: "Upload Spectra", "My Results", "My Contacts", and "Log Out". Below the menu is a "Need to know more?" section with a link to "Find out about our products and services". The footer contains copyright information: "© 2015 - Aunir | Help | Terms & Conditions | Site Version 1.1".

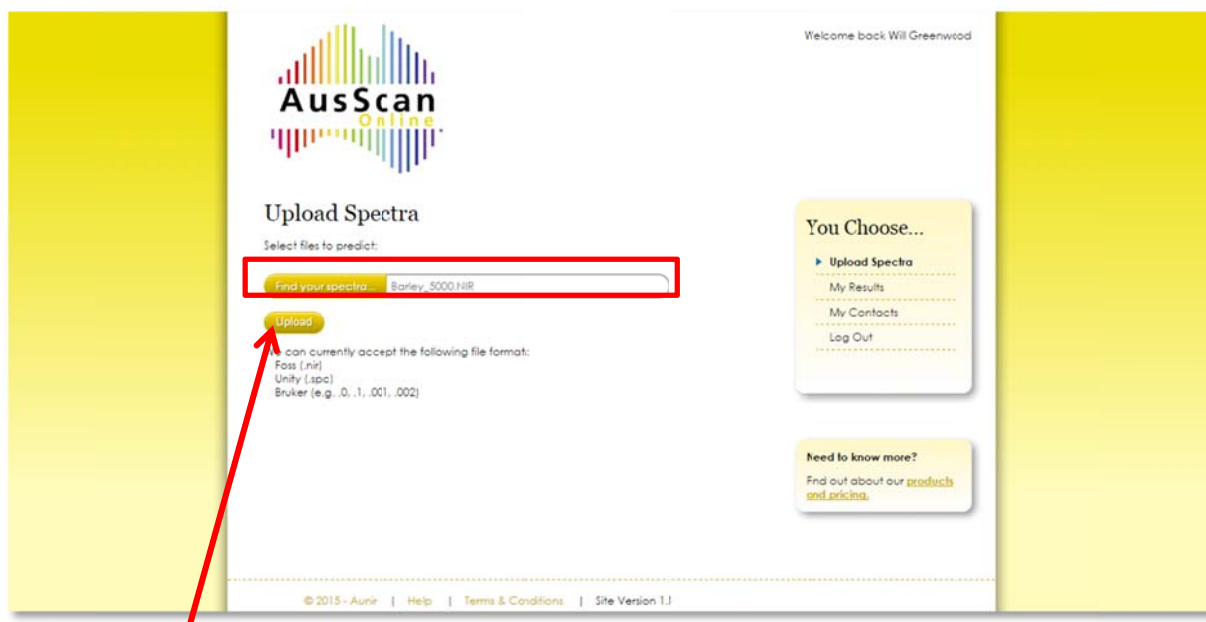
2. Click 'Find your spectra...'



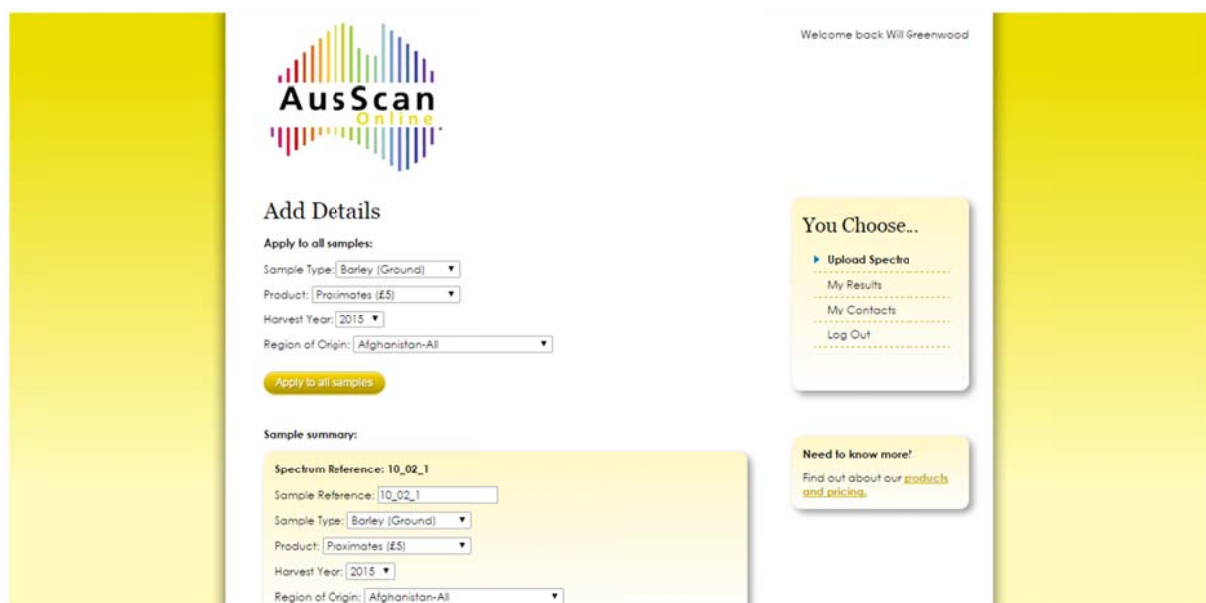
3. A box should appear allowing you to navigate to the folder on your computer where your spectra files are situated, below a barley spectra file is selected.



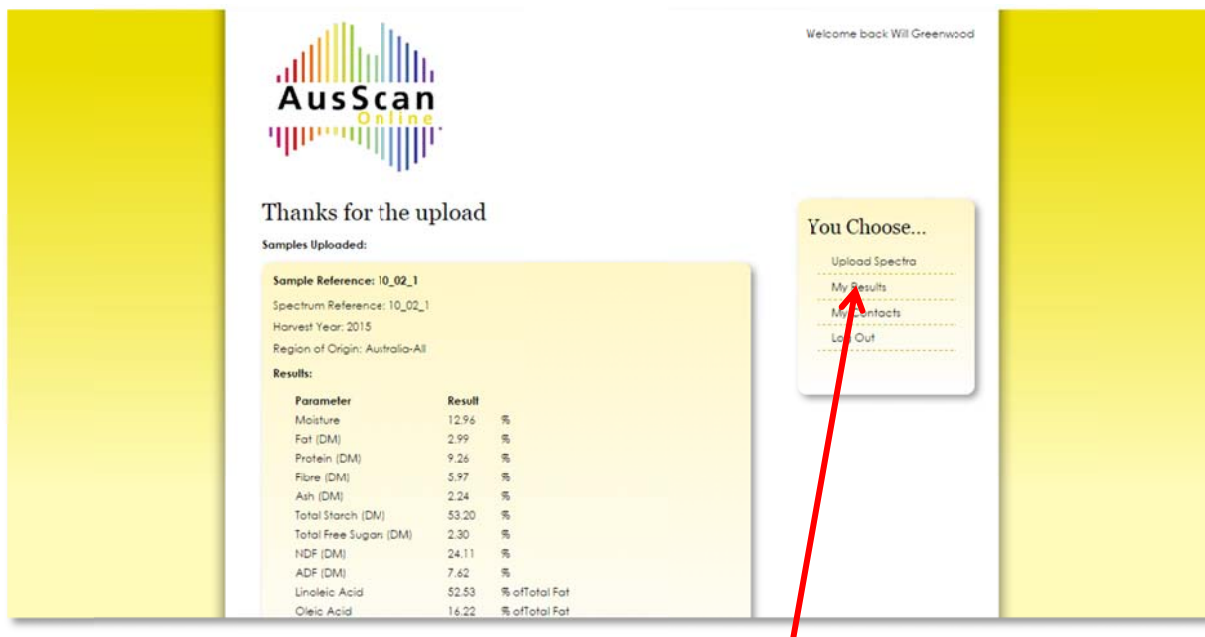
4. Either double click or highlight the correct sample and click 'open' and the file should appear in the box on the homepage as shown below:



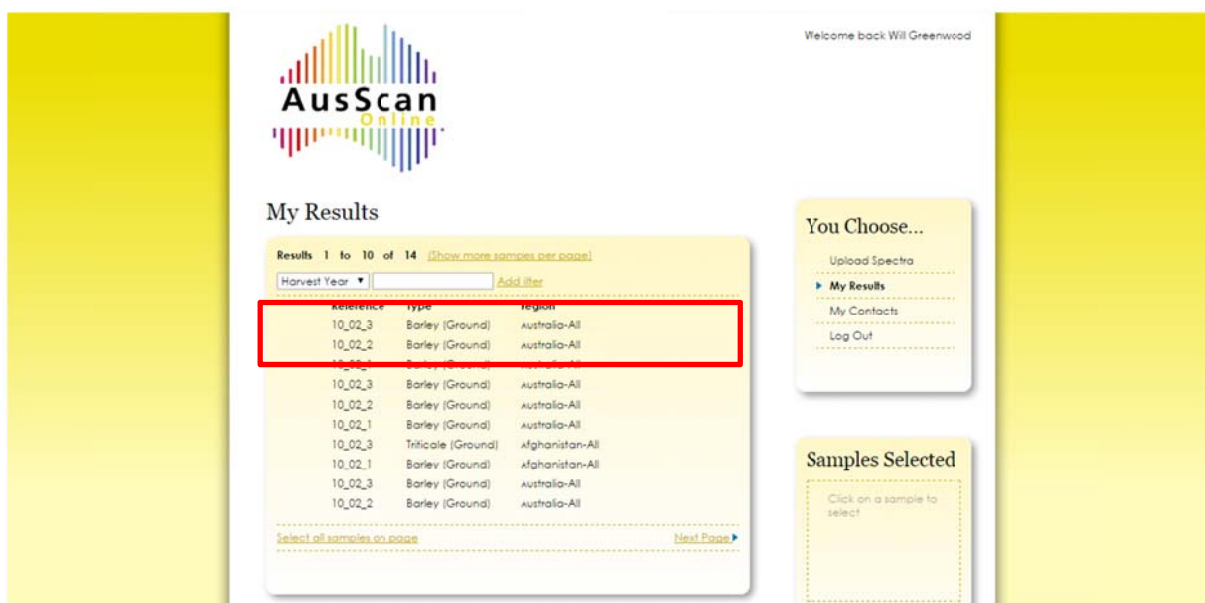
5. Click 'Upload' and you will go through to a screen where you can add sample data as shown below.



6. Foss files (as is the case here) can have more than one spectrum in the spectra file. The four options at the top allow you to add details for all samples by selecting the details from the drop-down list and clicking 'apply to all samples'. Below this you can change individual sample details and select products for each in the 'sample summary' section. Once you are happy with the details click 'Get results' at the bottom of the screen. This is when the predictions happen and after a few moments you should be able to see the initial results page:



7. Results can then be subsequently analysed in the 'My Results' tab on the right hand side of the page, the latest results (highlighted below) are at the top:



8. Click on these and the results will appear on a sample by sample basis in the viewer pane in the bottom half of the page. For further analysis you can export the results to Excel (to create the report) by selecting the samples you want to export and clicking the export to Excel icon at the bottom of the 'samples selected' box on the right hand side of the page.

Any questions?

Please e-mail caroline.oram@aunir.com or call +44 (0) 1327 810910